

SIDDHARTH RESIDENCY

2 & 3 BHK LIFESTYLE APARTMENTS



Where Tranquility Prevails!



Vinod Group was founded in 1997 by Mr. Vinod Singhvi, the Chairman of the Group who is an avant-grade visionary with a profound experience in the capital market. The group has diversified the financial services to offer Wealth Management, Broking & Distribution, Commodity Broking, Portfolio Management Services and Real Estate Development.

Vinod Infradevelopers Limited, engaged in the Real Estate and Hospitality sector is an offshoot venture of Vinod Group. The Company's distinguished projects include Siddharth Avenue [Well-furnished 40 residential units in Jodhpur, Rajasthan], Siddharth Farms (Well developed 165 Farms at New Sojat Bypass, Pali) and Siddharth Enclave (Well-developed colony of 2500 residential plots at N.H.65)

This upcoming project, Siddharth Residency boasts of 144 units with 2-3 BHK Lifestyle Apartments with comprehensive amenities for comfortable living.

SIDDHARTH RESIDENCY

2 & 3 BHK LIFESTYLE APARTMENTS

Turning Your Dreams into an Address



This is where Buddha resides...in **Solitude!**



AMENITIES

SIDDHARTH RESIDENCY
2 & 3 BHK LIFESTYLE APARTMENTS



Children Play Area



Tennis Court



Water Body



Jogging Track



Swimming Pool



Gymnasium & Health Club



Landscaping



24 Hours Security



Club House



Banquet Hall



Ample Car Parking



Power Back Up for Common Facilities



Materialism and Spiritualism finds
the right balance...in **Serenity!**



A cool and **calm** mind resides
in a healthy body!

AERIAL VIEW

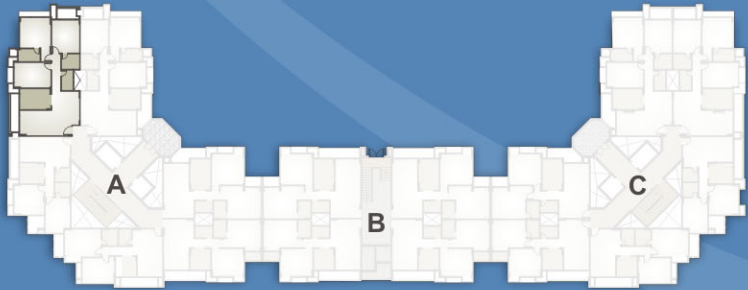


SITE LAYOUT PLAN

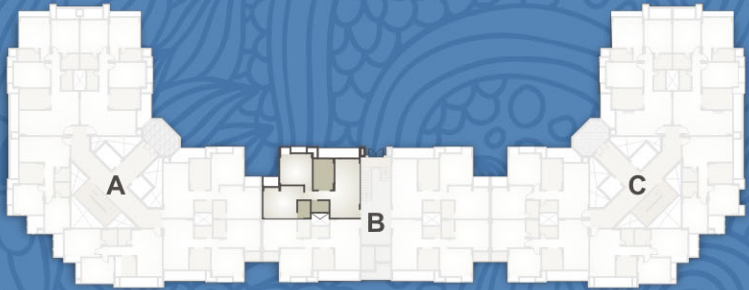




3 BHK UNIT PLAN
BLOCK A1, A2, C1 & C2

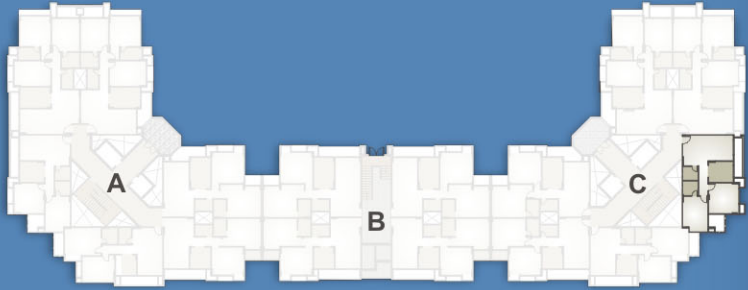


2 BHK UNIT PLAN
BLOCK A5, A6, B1, B2, B3, B4, C5 & C6

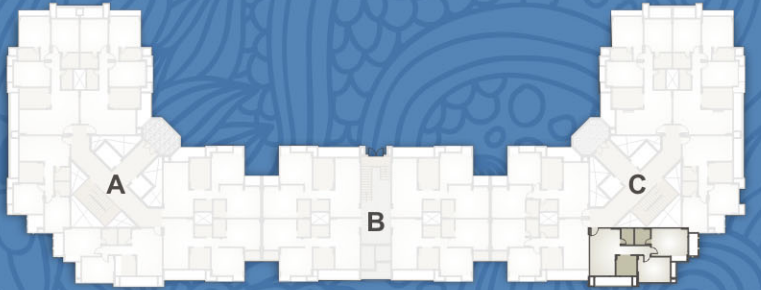




2 BHK UNIT PLAN
BLOCK A3 & C3



2 BHK UNIT PLAN
BLOCK A4 & C4





The quiet environs instill **stability** even in the stormy rippling corners of our mind

SPECIFICATIONS

STRUCTURE

Earthquake Resistant R. C. C. Frame.

FLOORING

Vitrified Tiles Flooring in Bed Room, Kitchen & Living, Anti Skid Flooring in Toilets & Wash Area, Rustic Tiles Floor in Balconies.

KITCHEN

Granite Kitchen Platform with Stainless Steel Sink, Glazed Ceramic Dado Tiles upto 4'0" Height, Anti-cockroach Trap for Outlets, & Modular Kitchen.

DOOR

Main Gate with Veneer Polish and Flush Door in Bedroom.

WINDOWS & DOOR JAMB

Granite jamb for windows & door.

ELEVATOR

Two Automatic Elevators for every Wing (6 in Total).

PAINTING / COLOR

Superior Quality Emulsion for External Walls and Lippi Finish on Internal Walls.

TOILETS

Glazed Tiles Dado of 7'0" Ht. on the Walls. Superior Quality White Sanitary Wares, Concealed Plumbing with Premium Quality C. P. Fittings.

ELECTRICAL

Concealed Copper Wiring, Cable and Telephone Points in Living Room & Master Bed Room, Adequate Electrical Points.

OTHERS

Internal Roads of RCC / Pattern designed Stone paving.
Anti-Termite Treatment, Fire Fighting System.

Disclaimer

The information contained in this brochure is indicative of the kind of development that is proposed and issued in good faith and is for guidance only. It does not constitute part of an offer or contract. All plans, specifications, features etc. are subject to the approval of the respective authorities and would be changed, if required by the promoters and architects without any prior notice or obligations. This brochure is not to be treated as part of the legal document and is only for an easy display of the project.



KEY PLAN

(NOT TO SCALE)



SIDDHARTH RESIDENCY
2 & 3 BHK LIFESTYLE APARTMENTS

Site Address:

Siddharth Residency

Behind Jain Enclave, Near DPS Circle, Pal Road, Jodhpur.



Current Projects



Siddharth Avenue | 40 Residential Units of 2 & 3 BHK
Before Kaylana Circle, Jodhpur



Siddharth Farms | 165 Farm House Spaces
New Sojat Bypass, Pali

Developers:

Vinod Infradevelopers Limited

Office: 110, First Floor, Adeshwar Tower, Chopasni Road, Jodhpur.

Ph.: 0291 - 5100591 / 599, Mobile: 98280 93399

Email: info@vinodinfra.in, Web: www.vinodinfra.in

Architect:

Manish Dev

Dev Architect, Jodhpur

94141 31886

Structure Consultant:

Manish Gupta

S. G. Structures, Jaipur

97722 02219

Legal Advisor:

Anil Singhvi

Jodhpur

98280 31500